



Výškový systém Bpv
Souřadnicový systém S-JTSK


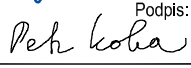
Změna:	Název změny:	Datum:	Provedl:	Podpis:

Investor, objednatel:	Správa železnic, s.o. Dlážděná 1003/7, 110 00 Praha 1 kontaktní adresa: Správa železnic, s.o. Stavební správa západ Sokolovská 1955/278, 190 00 Praha 9	Inženýrská činnost: METROPROJEKT Praha a.s. Argentinská 1621/36, 170 00 Praha 7 Aleš Smrček, tel: +420 296 154 348
-----------------------	--	--

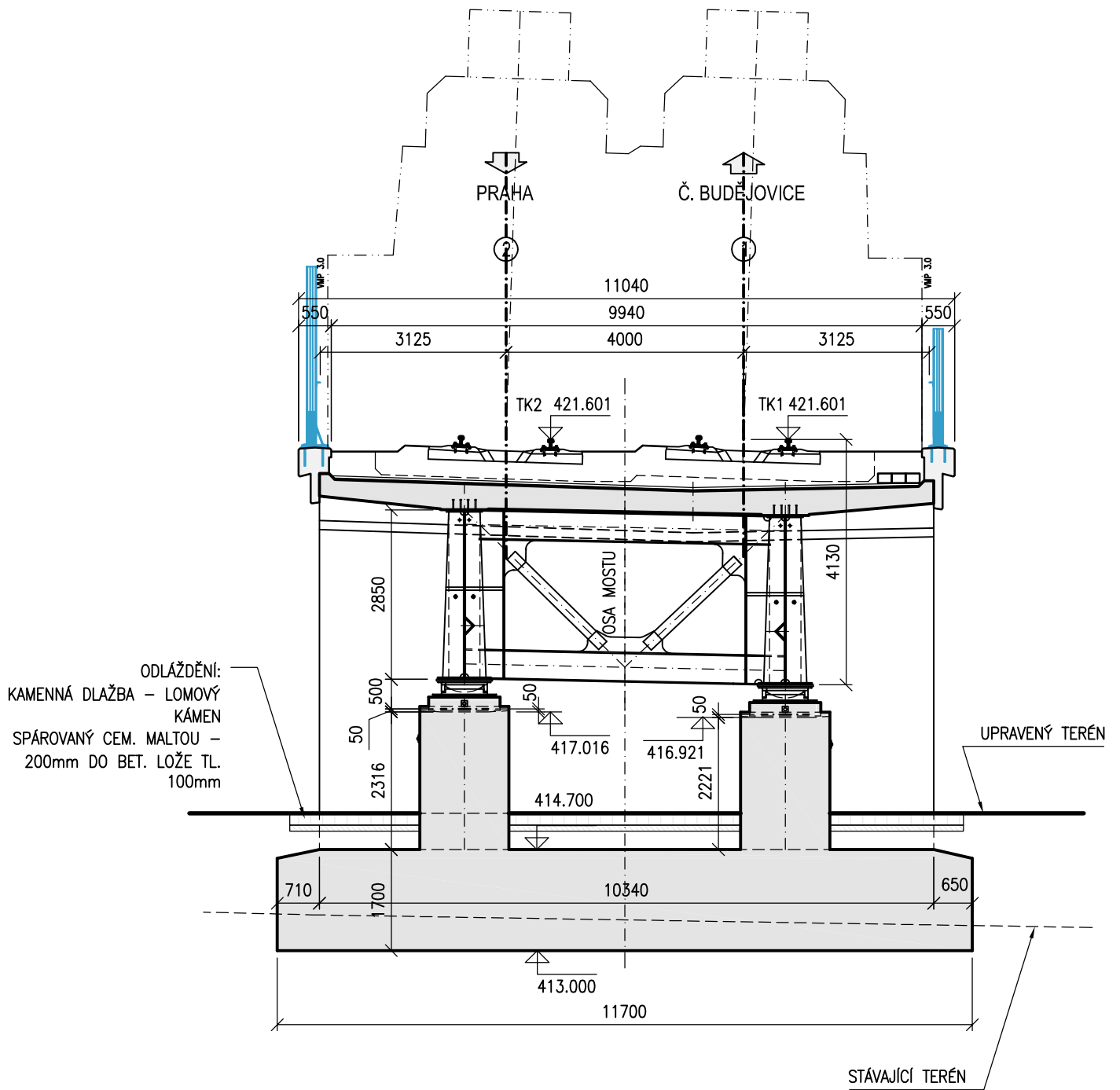
METROPROJEKT Praha a.s. Argentinská 1621/36, 170 00 Praha 7 generální ředitel: Ing. David Krása tel.: +420 296 154 105 www.metroprojekt.cz info@metroprojekt.cz		Souprava číslo:
---	--	-----------------

HIP:	Podpis:	Název a účel díla:
Ing. Petr Zobal		Modernizace trati Veselí n.L. – Tábor - II.část, úsek Veselí n.L. - Doubí u Tábora, 2. etapa Soběslav - Doubí, Zvýšení rychlosti nad 160 km/h
tel.: +420 296 154 247		
Stupeň:	DSP+PDPS	

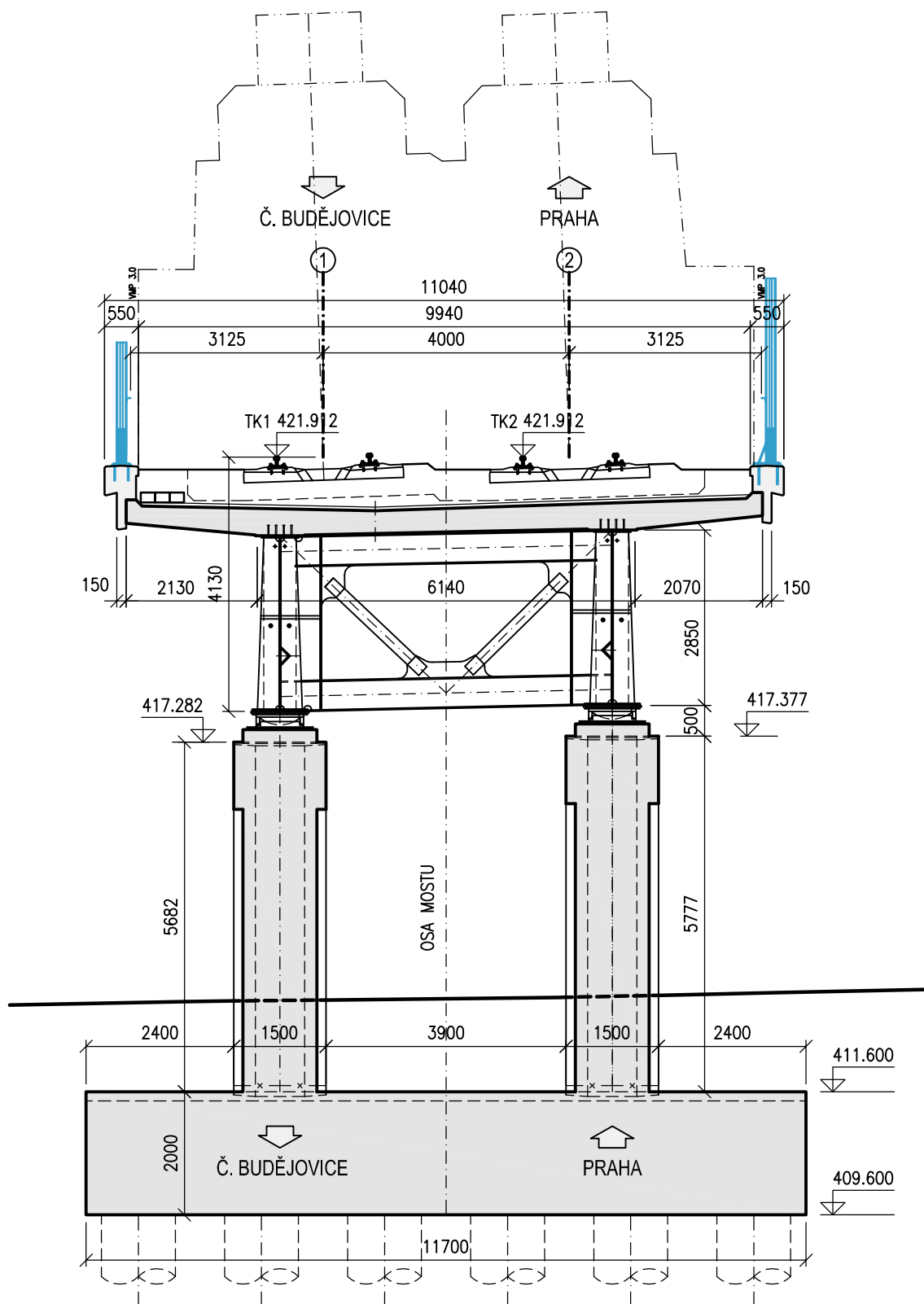
Zpracoval:	Název části díla:	
stř. S52 - stavební	S-52 STAVEBNÍ ČÁST	E
tel.: +420 296 154 349	INŽENÝRSKÉ OBJEKTY	E.1
Vedoucí útvaru:	MOSTY, PROPUSTKY, ZDI	E.1.4
Roman Dušek	ŽELEZNIČNÍ MOSTY	
Odpovědný projektant:	SO 52-20-02 - MOST V KM 65,422	E.1.4.8
Ing. Jan PEŠATA		

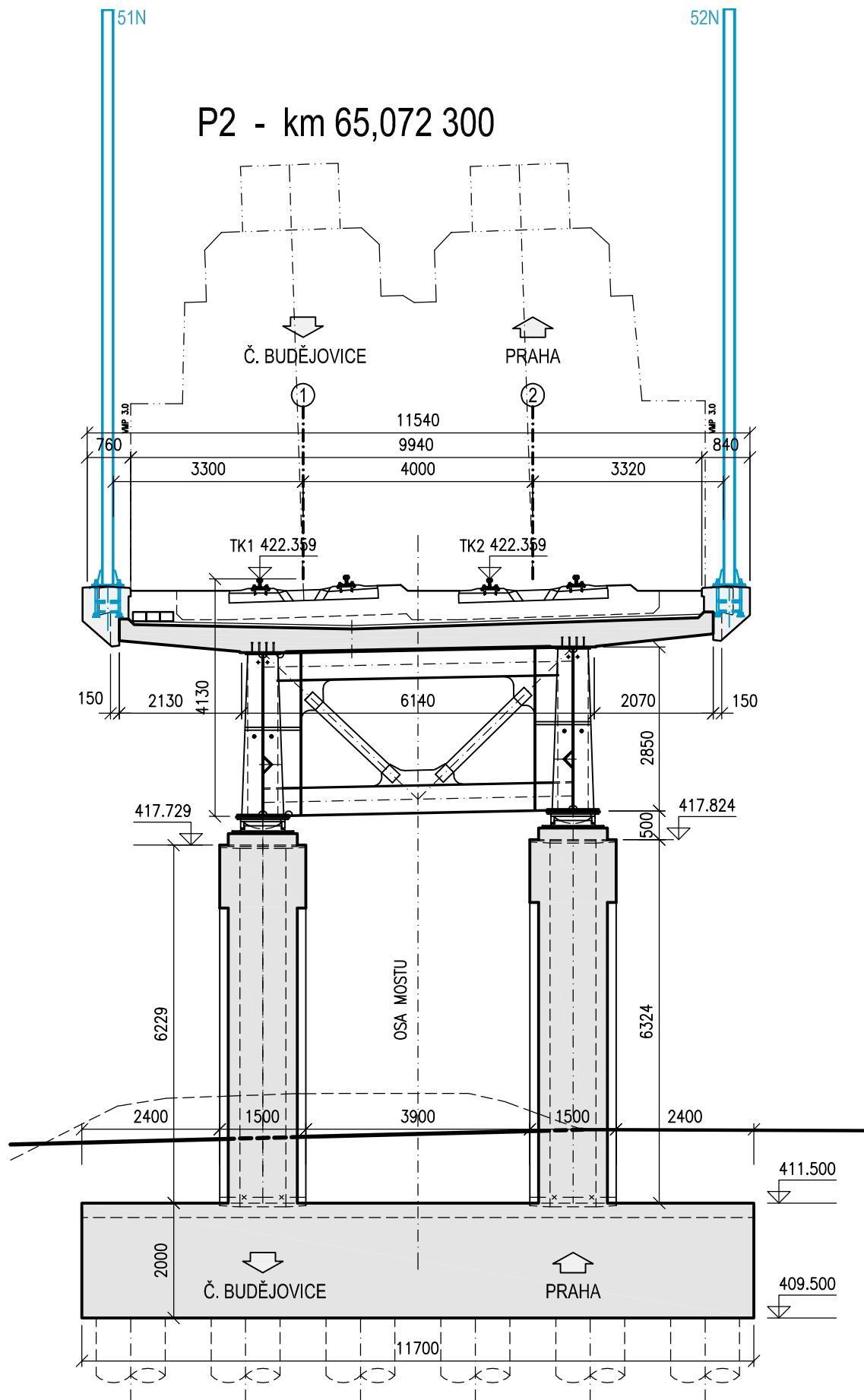
Vypracoval:	Podpis:	Název přílohy:	Změna:
Ing. Jan PEŠATA		PŘÍČNÉ ŘEZY V OSÁCH ULOŽENÍ	-
Kontroloval:	Podpis:		
Ing. Petr KOBZA			
Skart. znak:	V20/2041	Datum:	5/2020
Počet formátů:	29 x A4	Měřítko:	1:100
		IČD:	20 7831 05 01 04 08
			006

O1 - km 65,007 950



P1 - km 65,034 300





Technical drawing of a bridge cross-section, showing dimensions, elevations, and structural details.

Top Section (Deck and Approach):

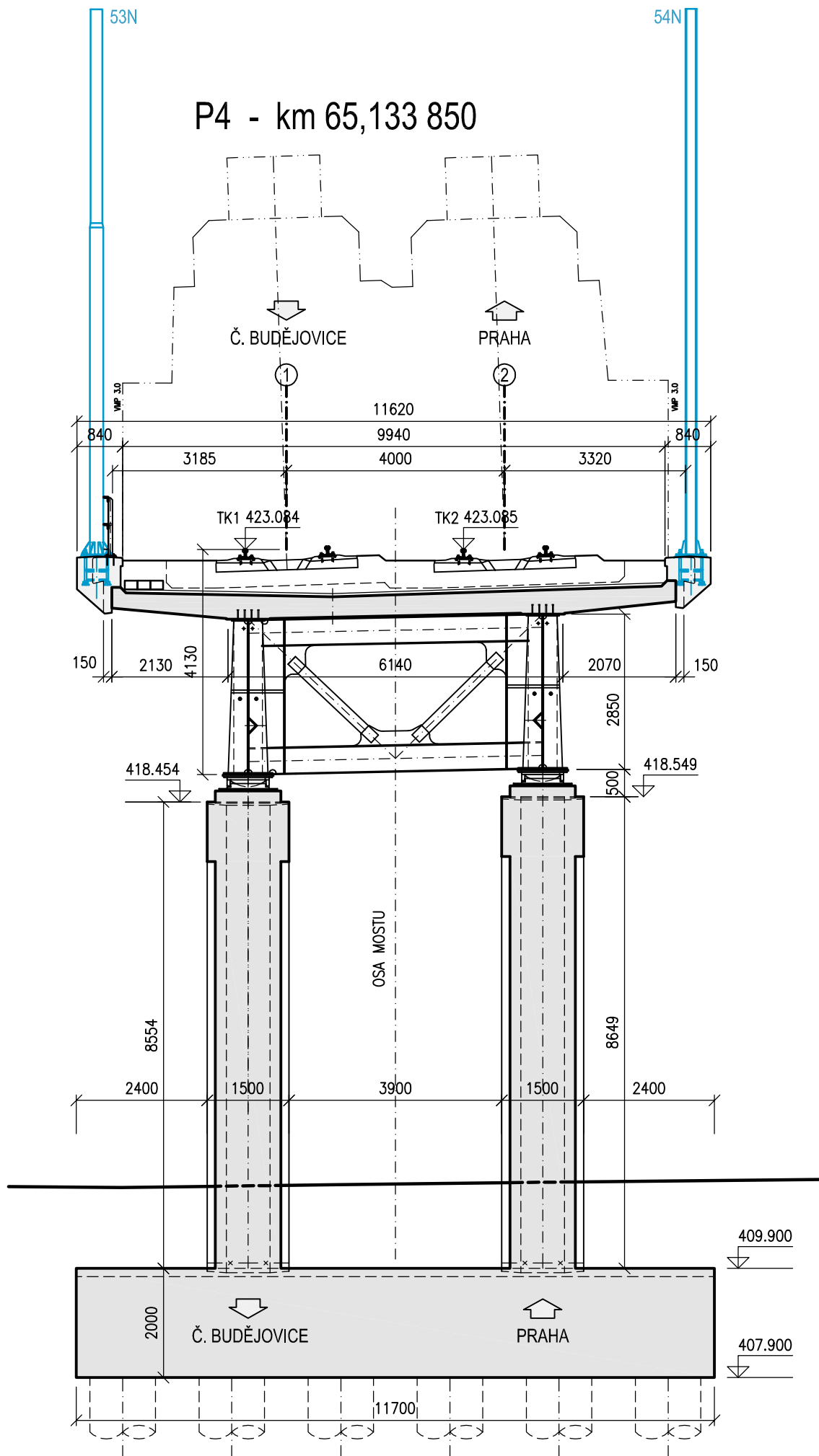
- Directional arrows point to **Č. BUDĚJOVICE** (left) and **PRAHA** (right).
- Horizontal dimensions: 450, 3185, 10940, 9940, 4000, 3125, 550.
- Vertical dimensions: 150, 2130, 4130, 6140, 2070, 150.
- Structural elements: **TK1 422.679** and **TK2 422.679** are marked on the deck.
- Labels **MP 3.0** are present on the left and right sides.

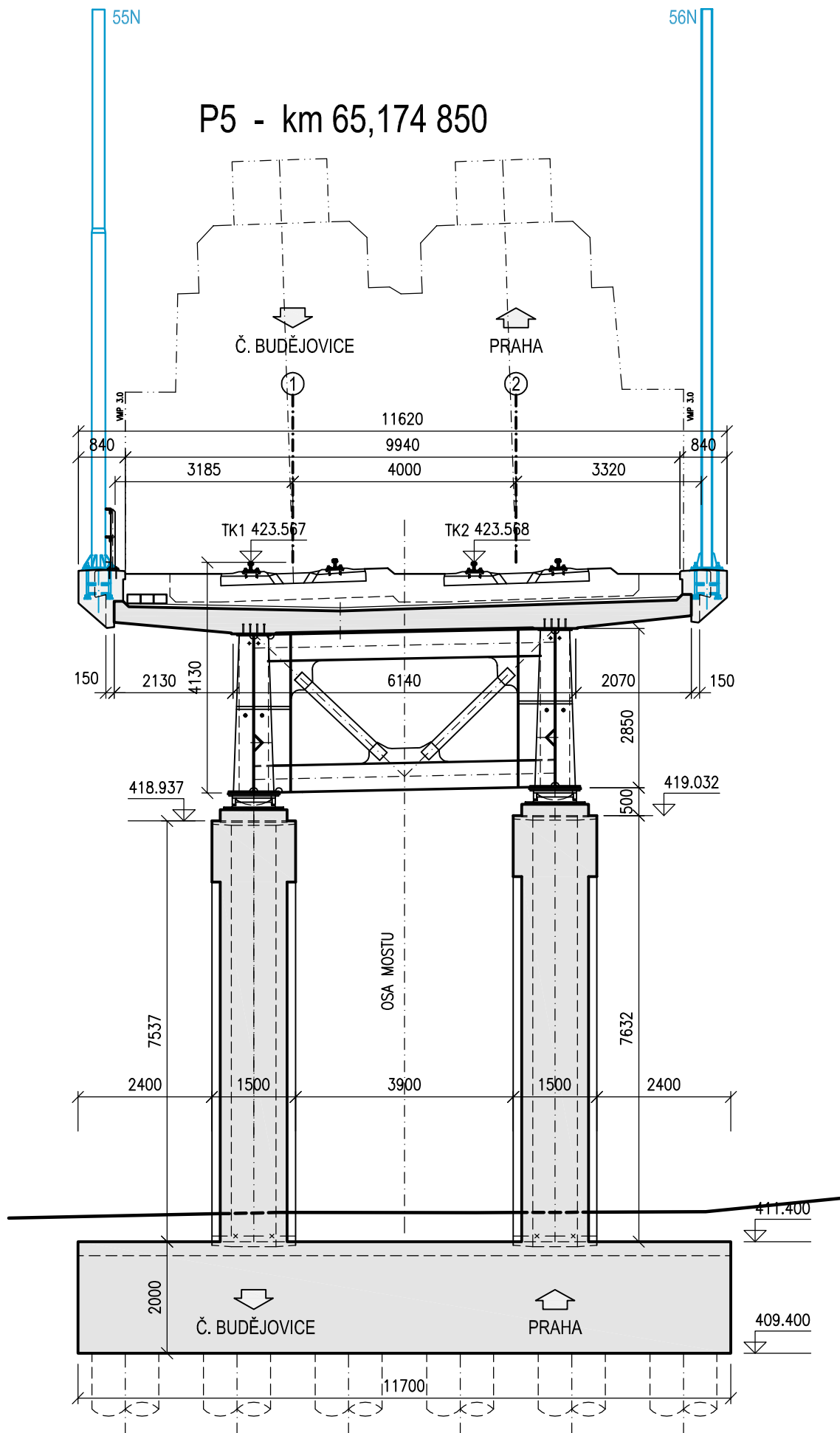
Middle Section (Truss and Piers):

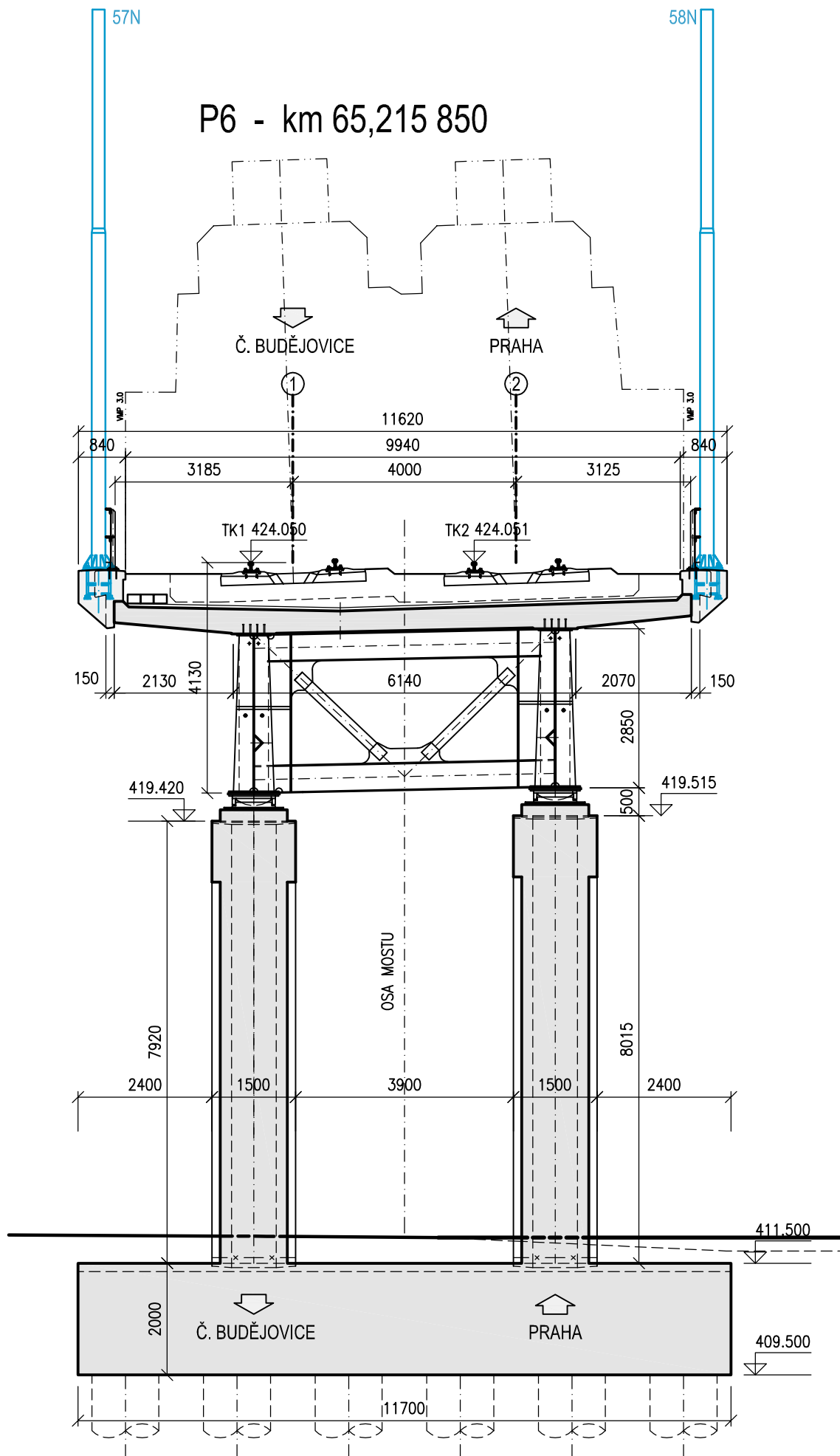
- Vertical dimensions: 2850, 500.
- Elevations: **418.049** (left pier top) and **418.144** (right pier top).
- Horizontal dimensions: 2400, 1500, 3900, 1500, 2400.
- Label **OSA MOSTU** (Bridge Axis) is centered.

Bottom Section (Foundation and Abutment):

- Vertical dimensions: 7149 (left pier height), 7244 (right pier height).
- Horizontal dimensions: 2000 (left abutment width), 11700 (total width).
- Elevations: **410.900** (right pier base) and **408.900** (right abutment base).
- Directional arrows point to **Č. BUDĚJOVICE** (left) and **PRAHA** (right).







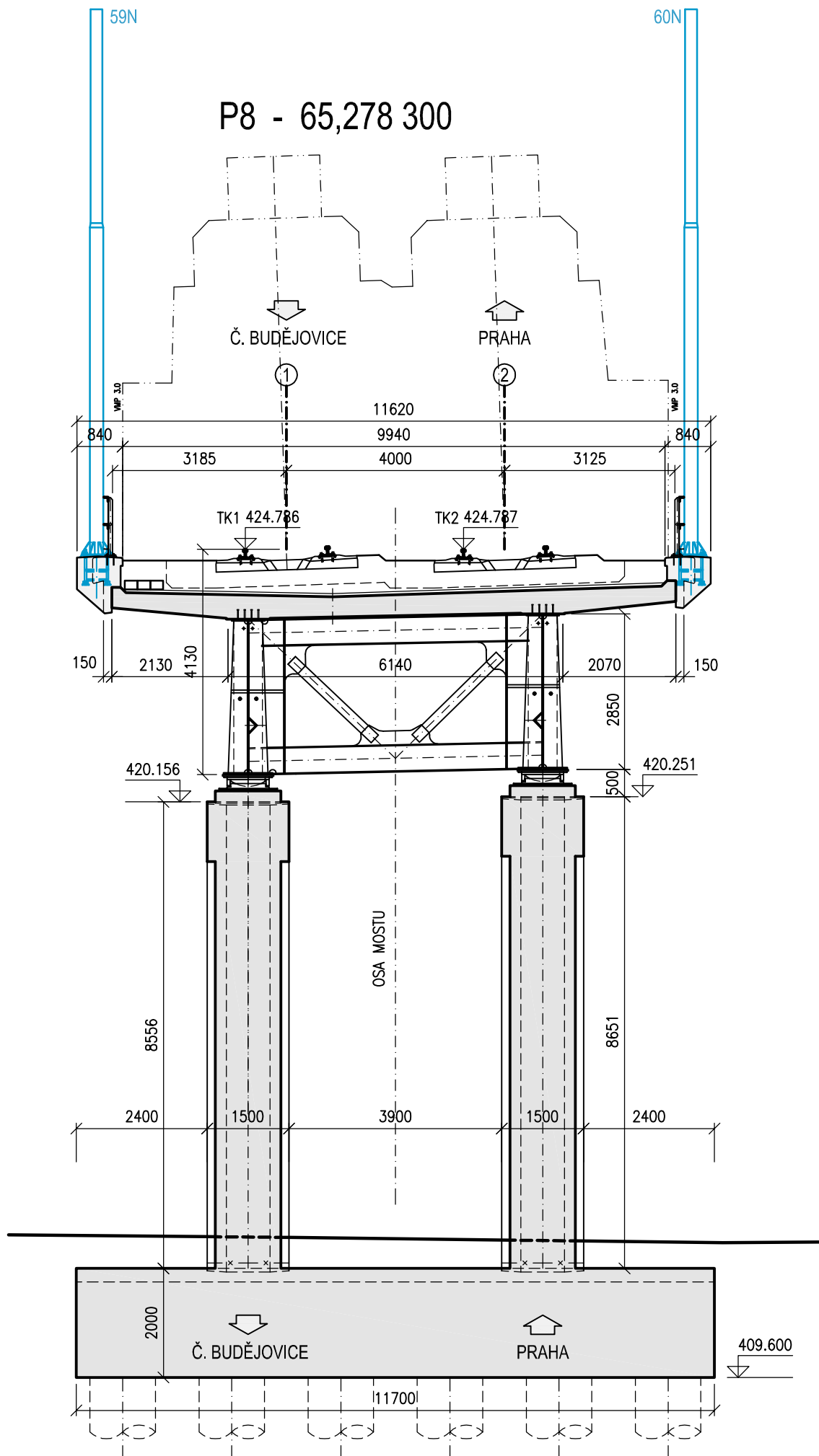
Technical drawing of a bridge cross-section, showing dimensions, elevations, and structural details. The drawing is oriented vertically, with the bridge deck at the top and the piers at the bottom.

Dimensions and Elevations:

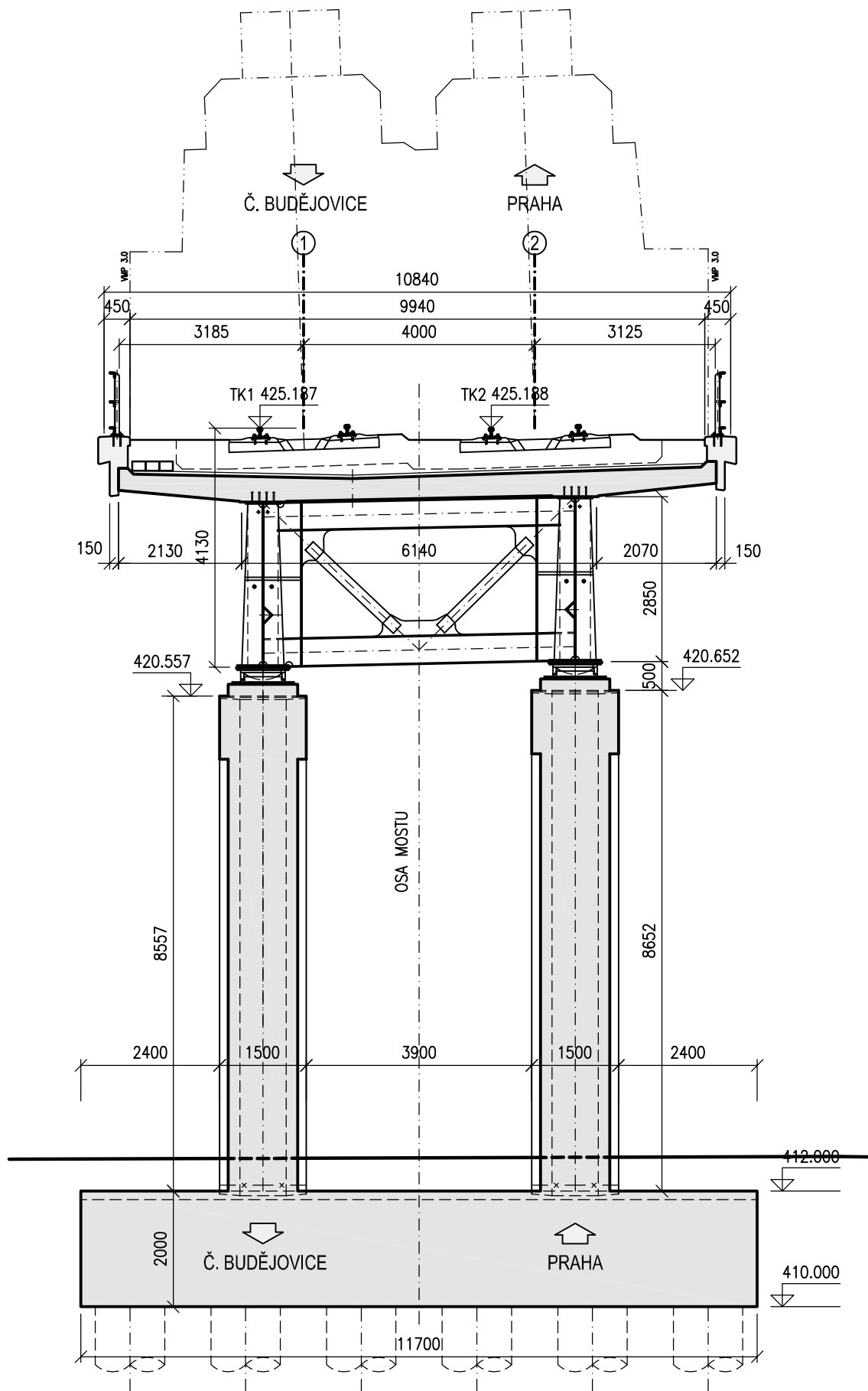
- Deck Width:** 10840 mm (total), 9940 mm (between main girders), 4000 mm (between main girders).
- Deck Height:** 450 mm (top flange), 150 mm (bottom flange).
- Span Lengths:** 3185 mm (left), 3125 mm (right).
- Clearance:** 4130 mm (between main girders), 2070 mm (between main girders).
- Structural Details:** TK1 424.456, TK2 424.457, 6140 mm (between main girders), 2850 mm (between main girders).
- Elevations:** 419.826 (left pier top), 419.921 (right pier top), 411.600 (deck level), 409.600 (pier base level).
- Pier Dimensions:** 8226 mm (left pier height), 8321 mm (right pier height), 2400 mm (pier width), 1500 mm (pier width).
- Ground Level:** 11700 mm (total width).

Labels and Orientation:

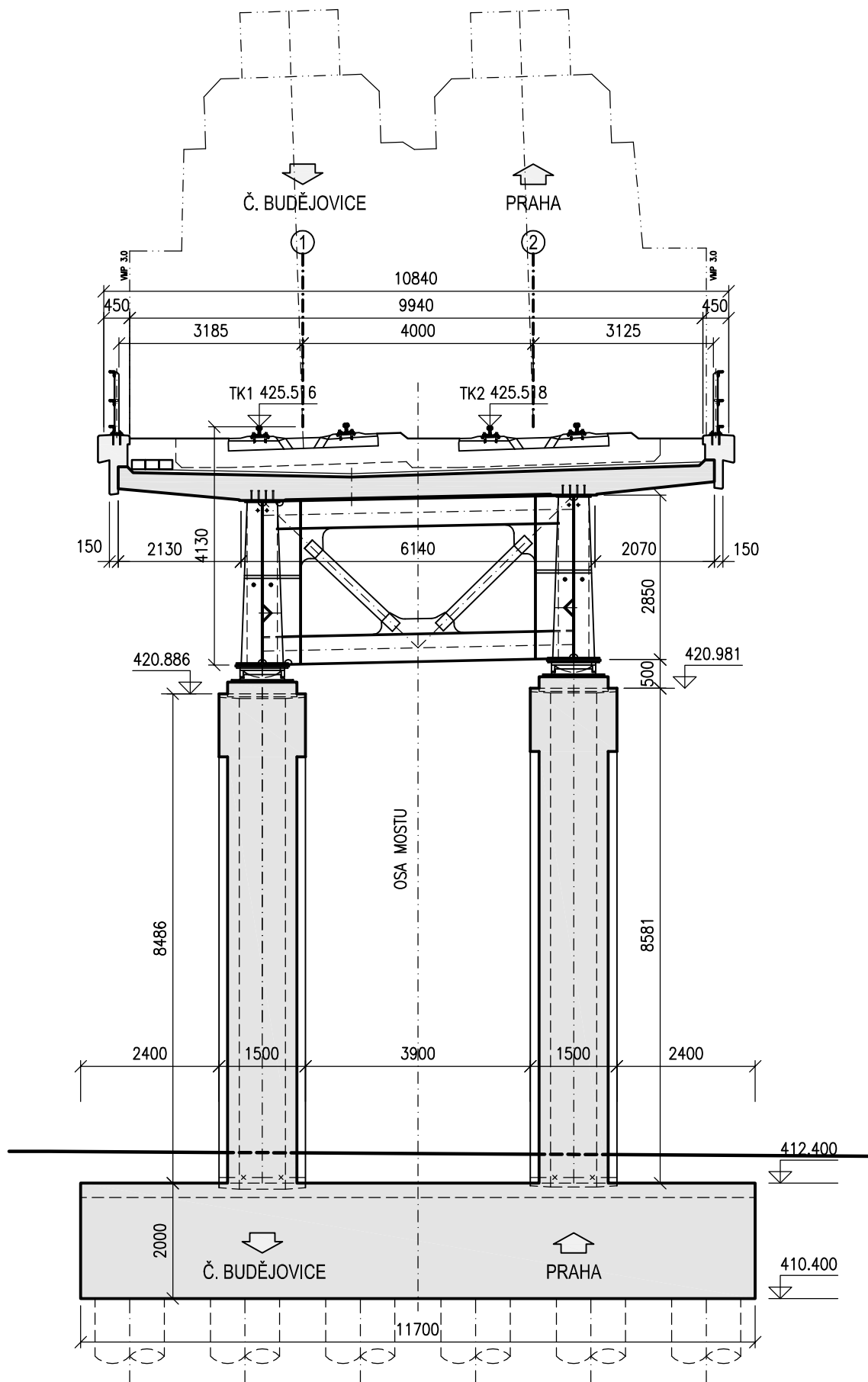
- Č. BUDĚJOVICE** (left side, indicated by a downward arrow).
- PRAHA** (right side, indicated by an upward arrow).
- OSA MOSTU** (center line of the bridge).



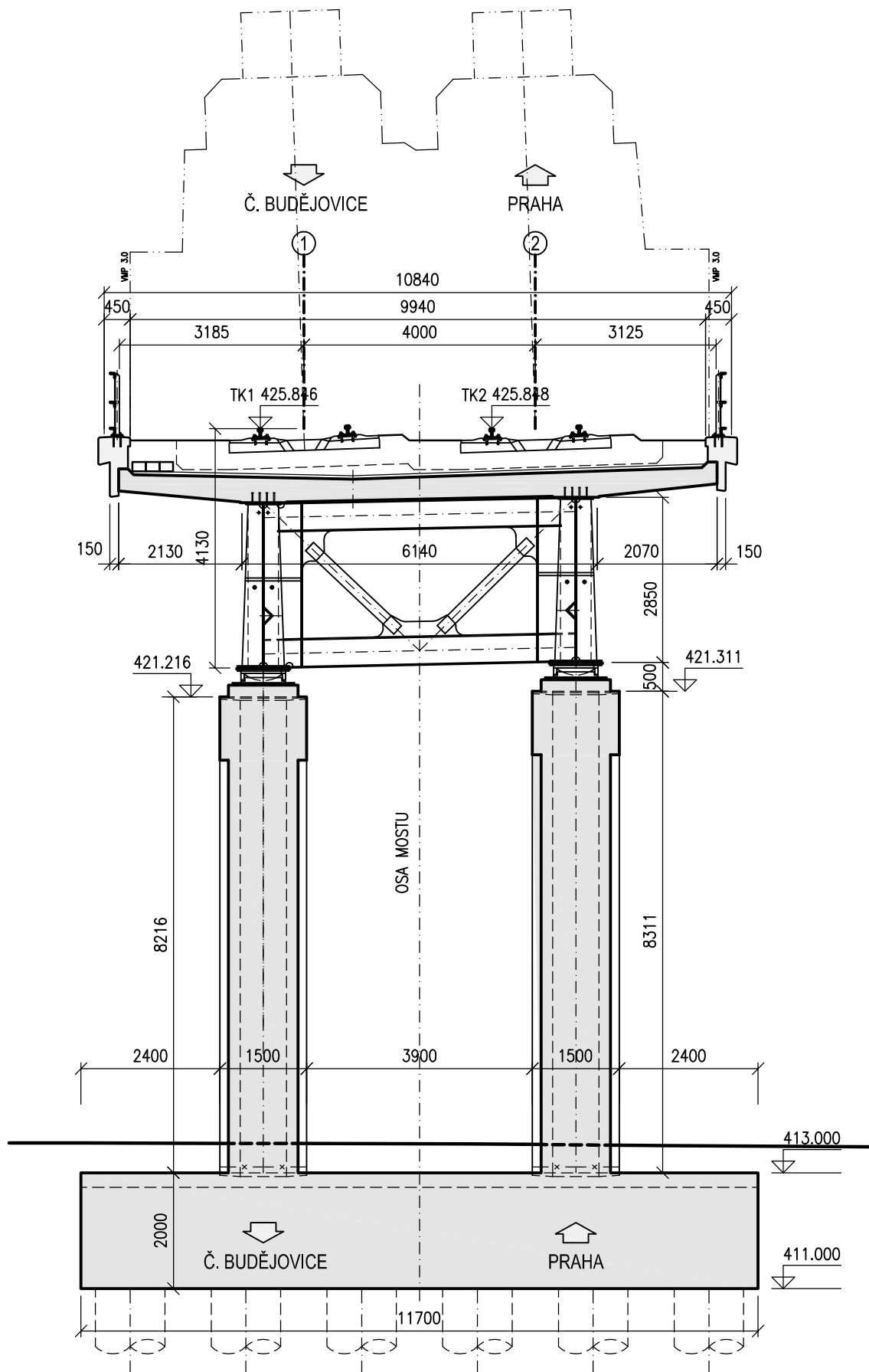
P9 - km 65,312 300

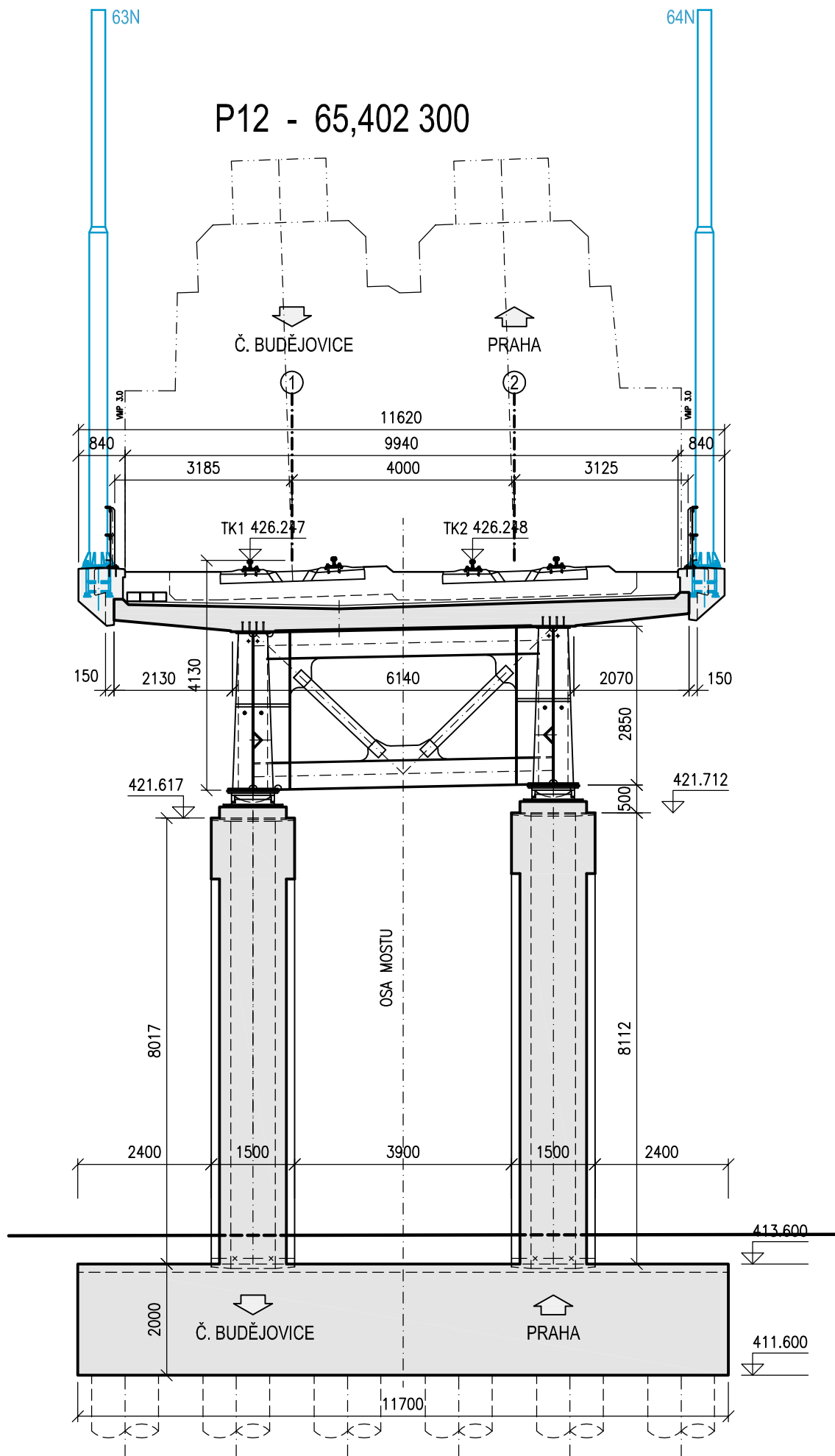


P10 - 65,340 300

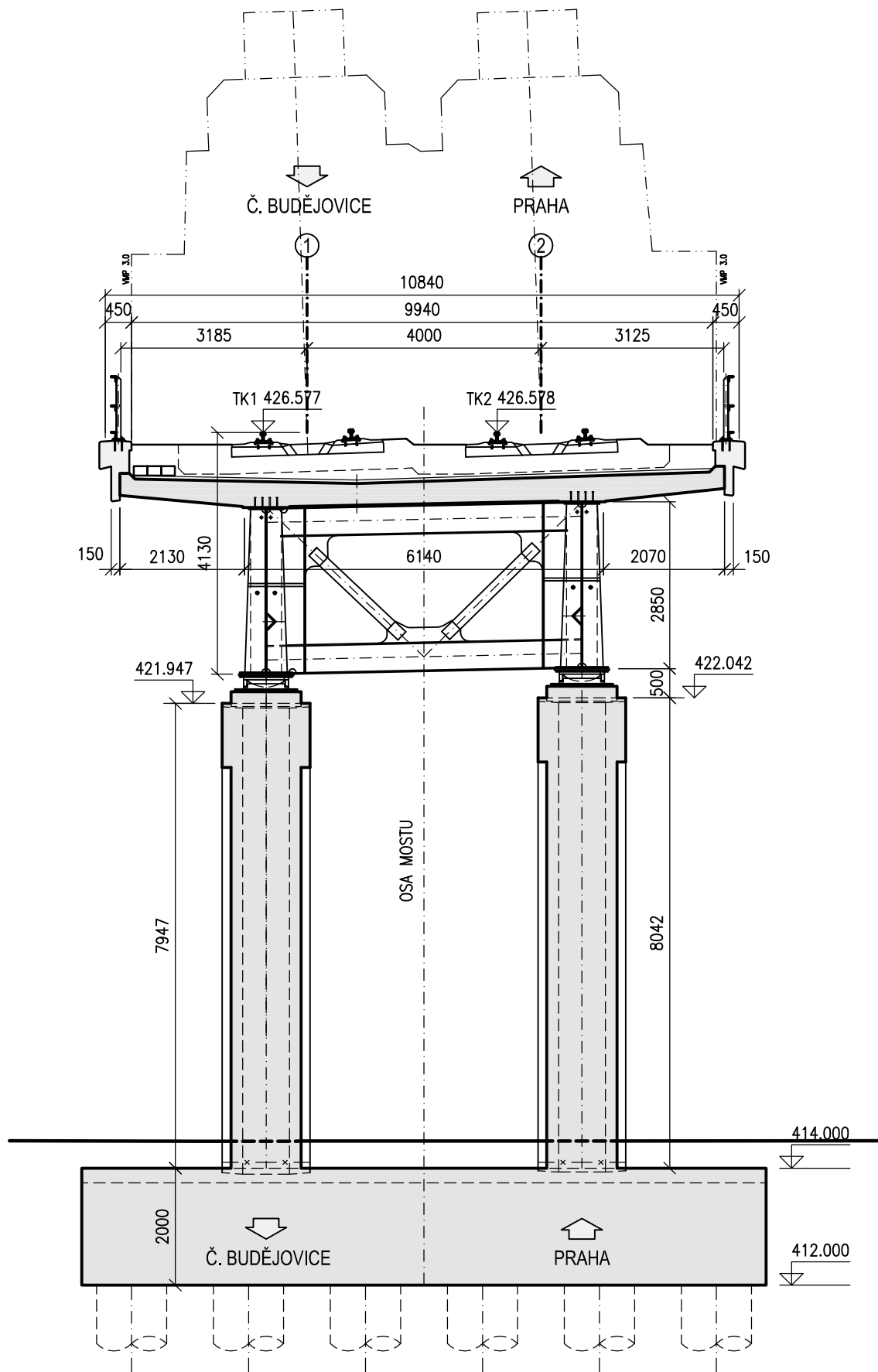


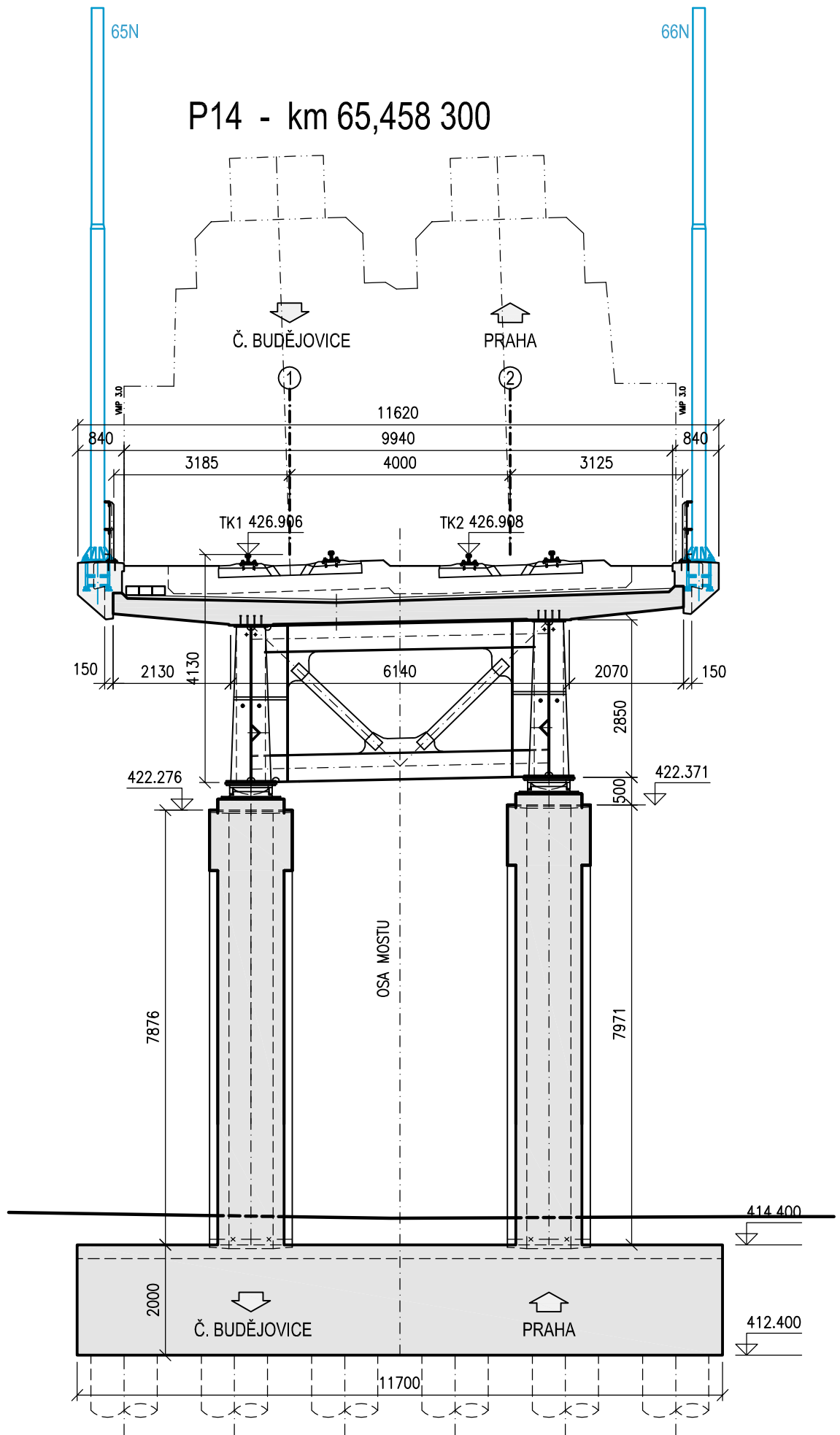
P11 - km 65,368 300



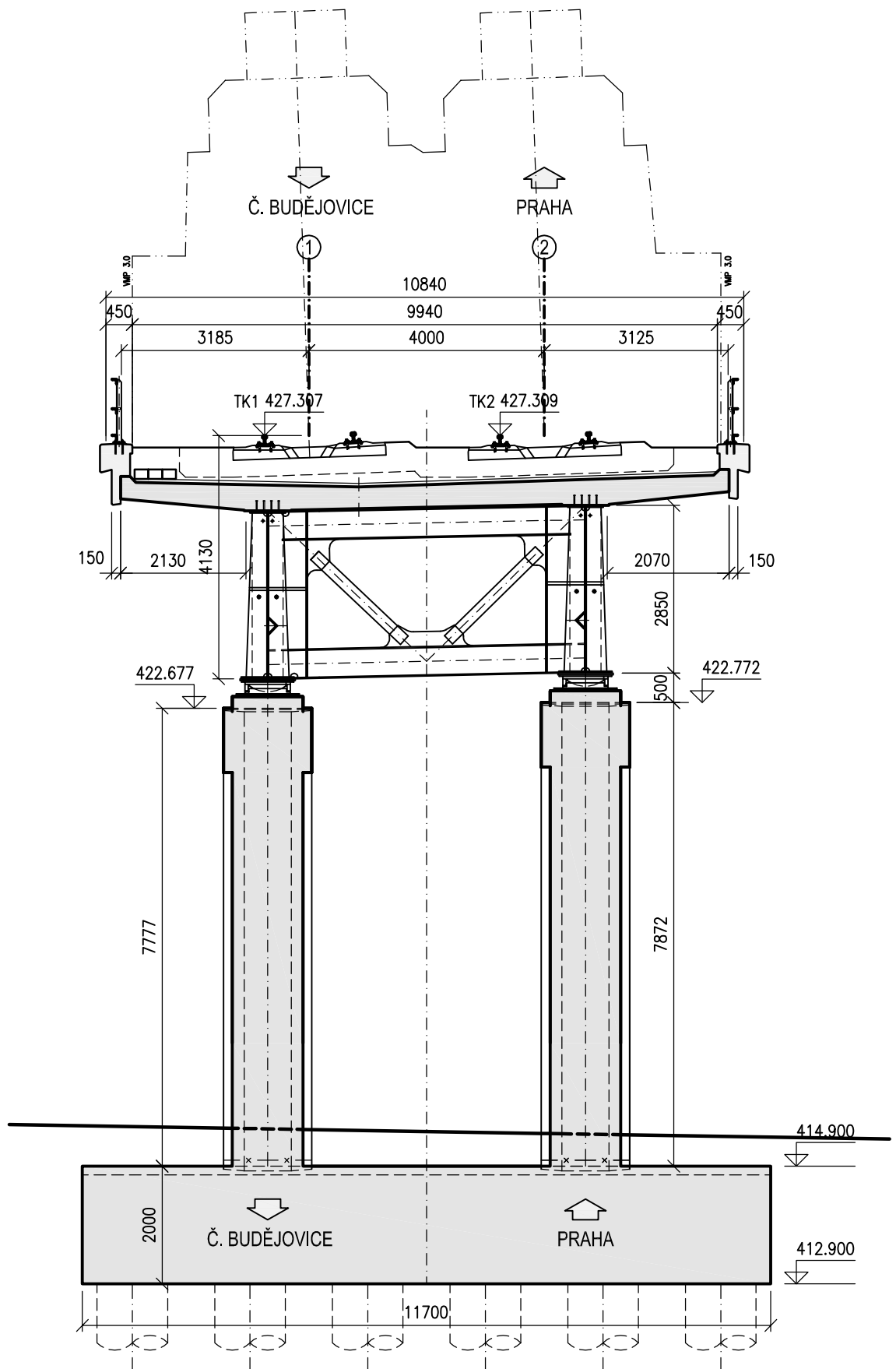


P13 - km 65,430 300

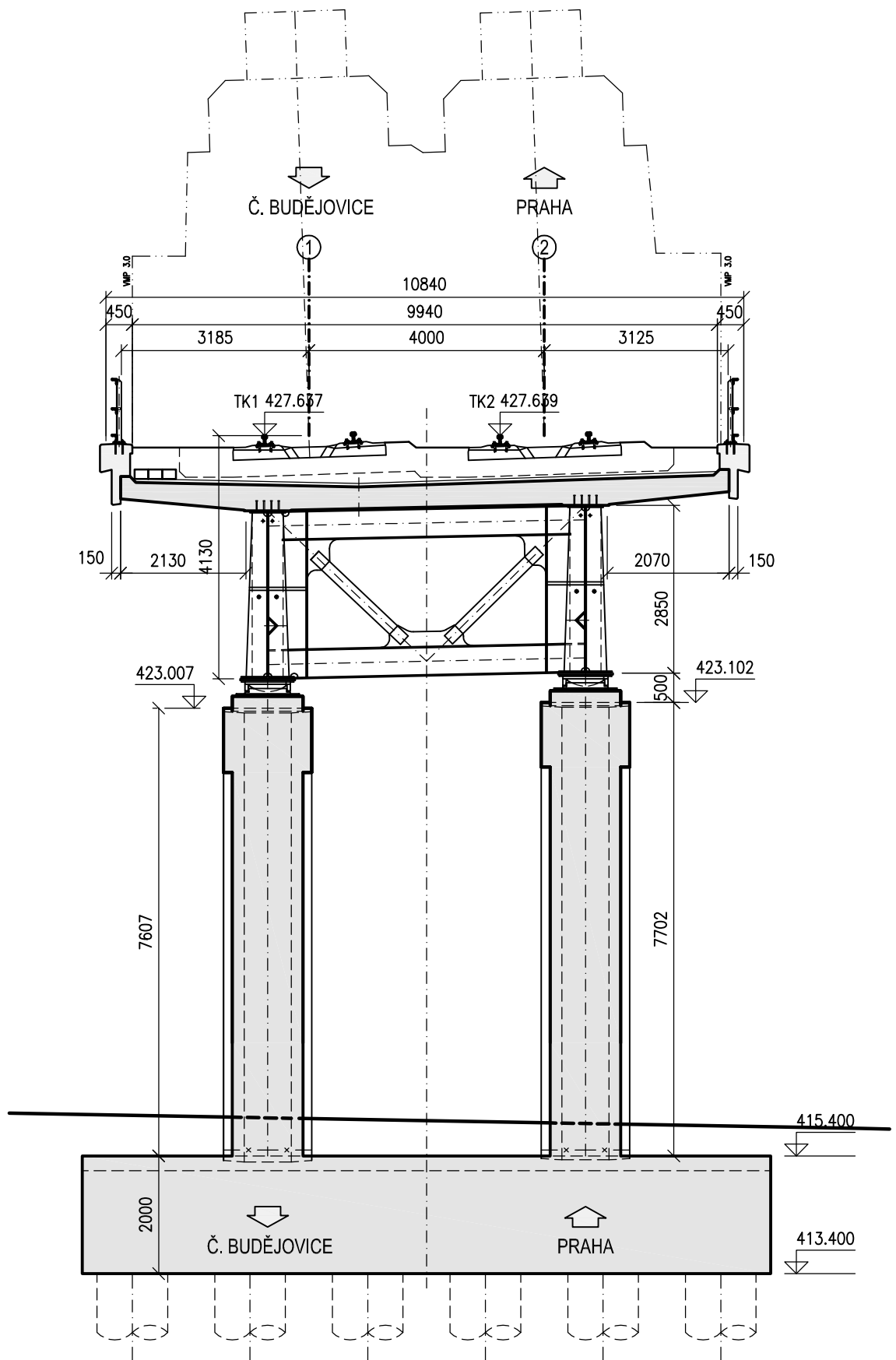




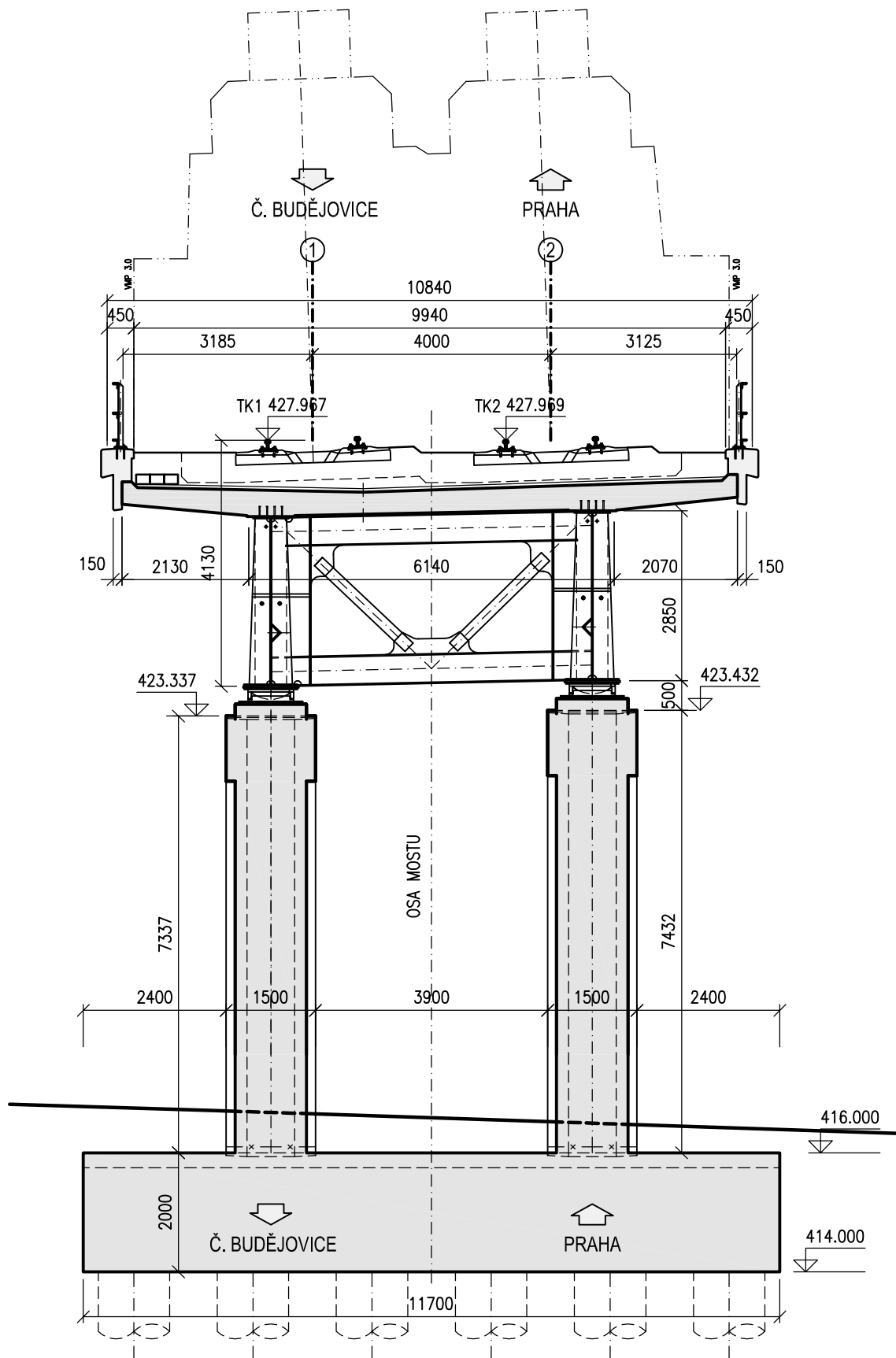
P15 - km 65,492 300

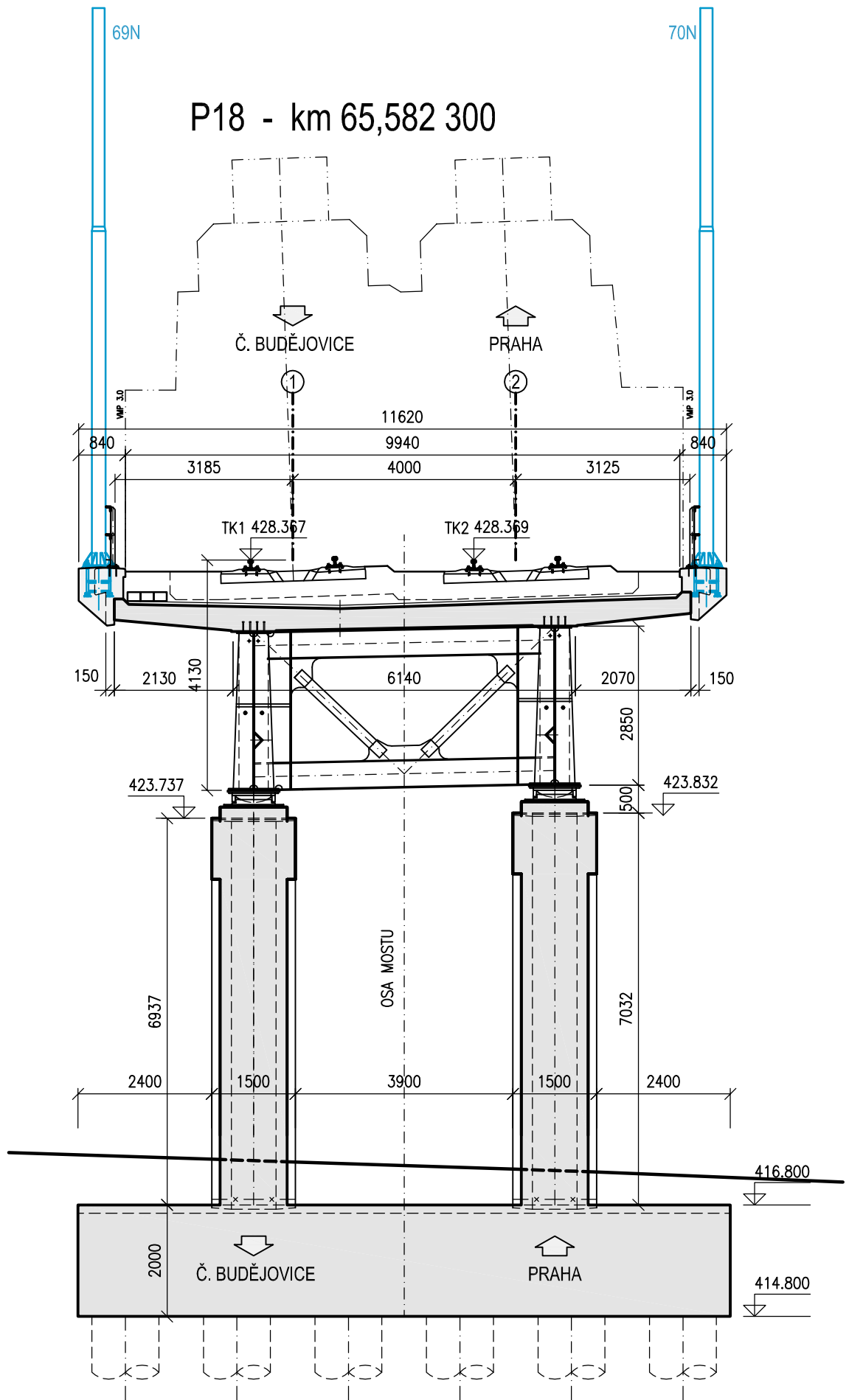


P16 - km 65,520 300

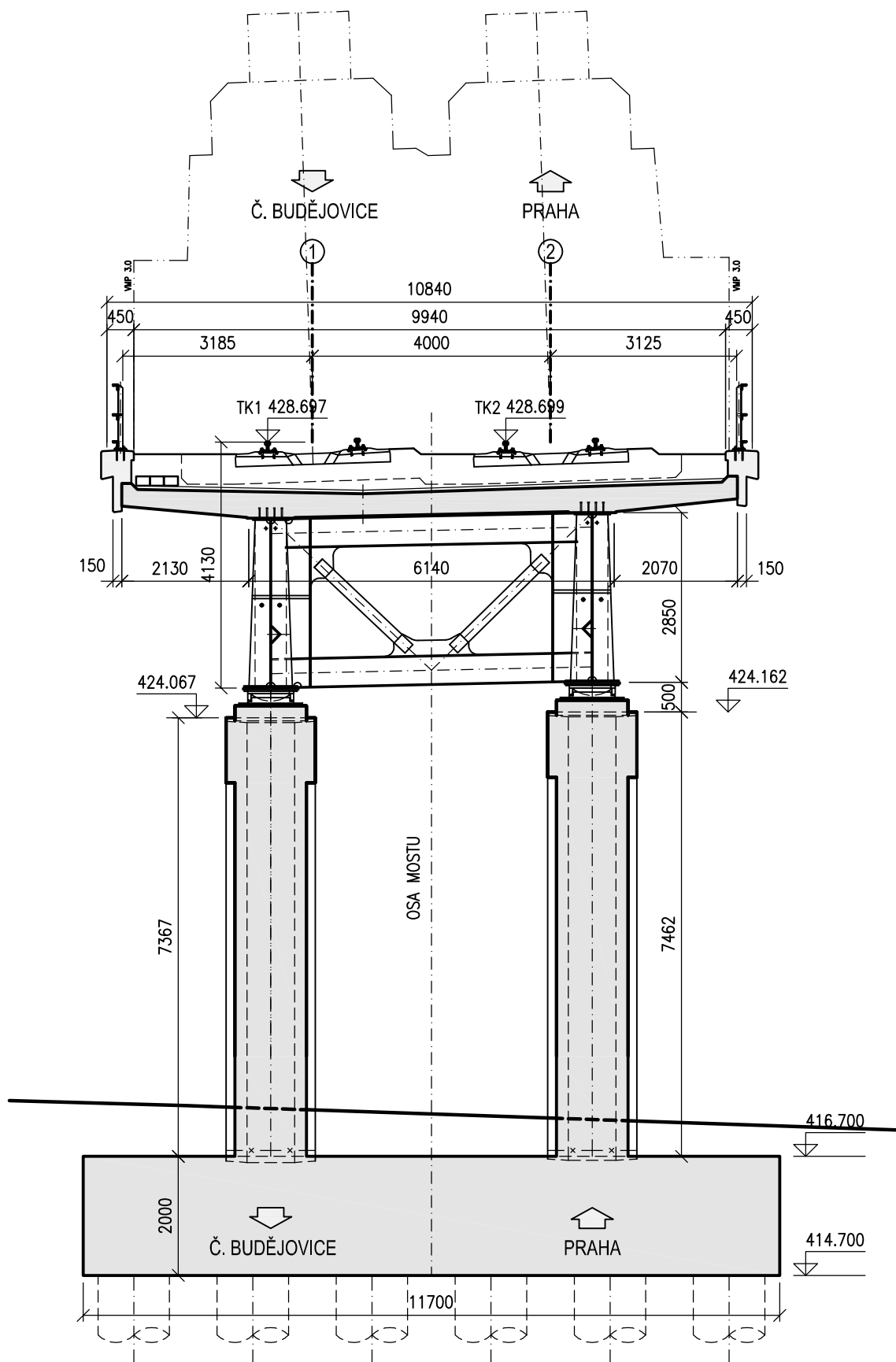


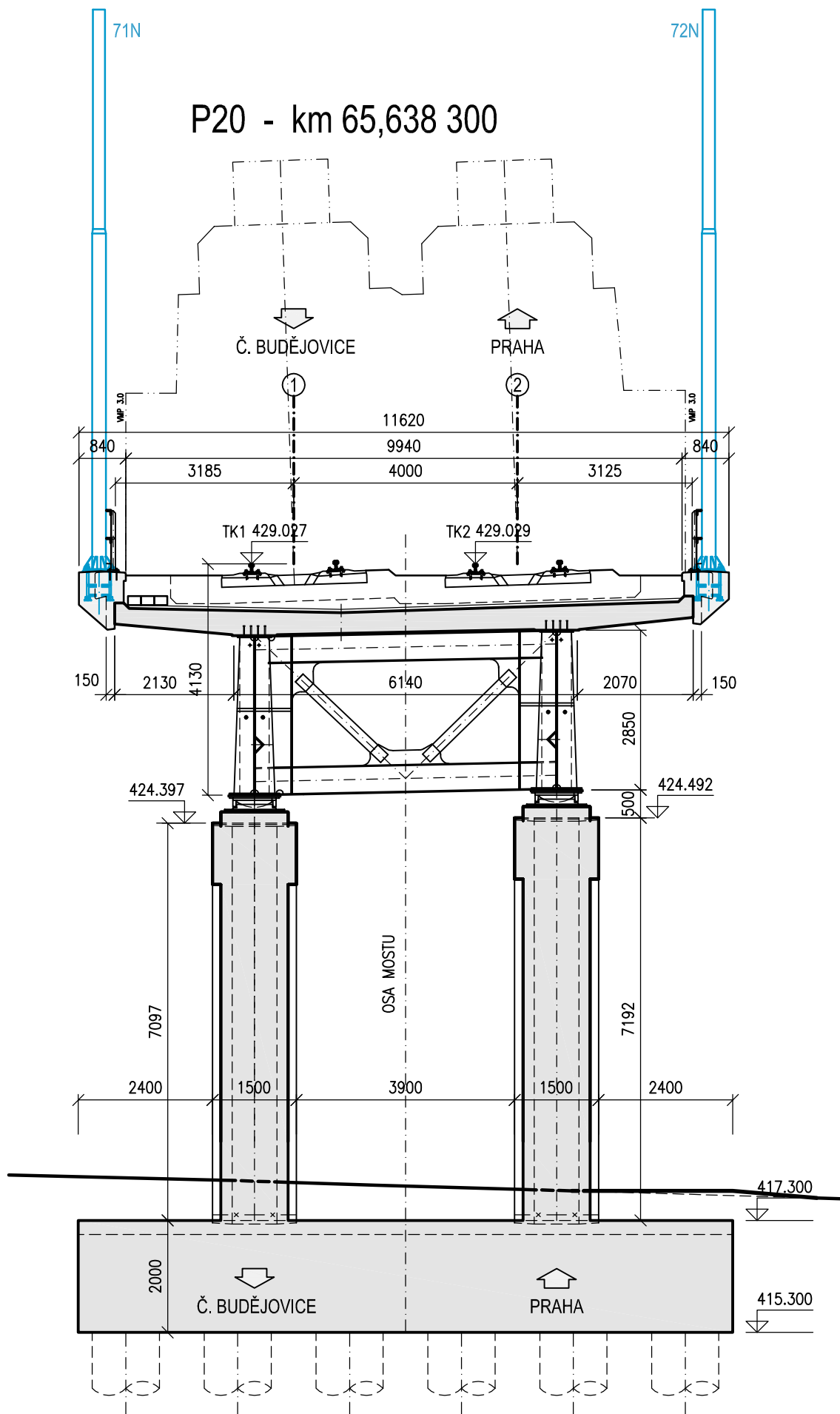
P17 - km 65,548 300



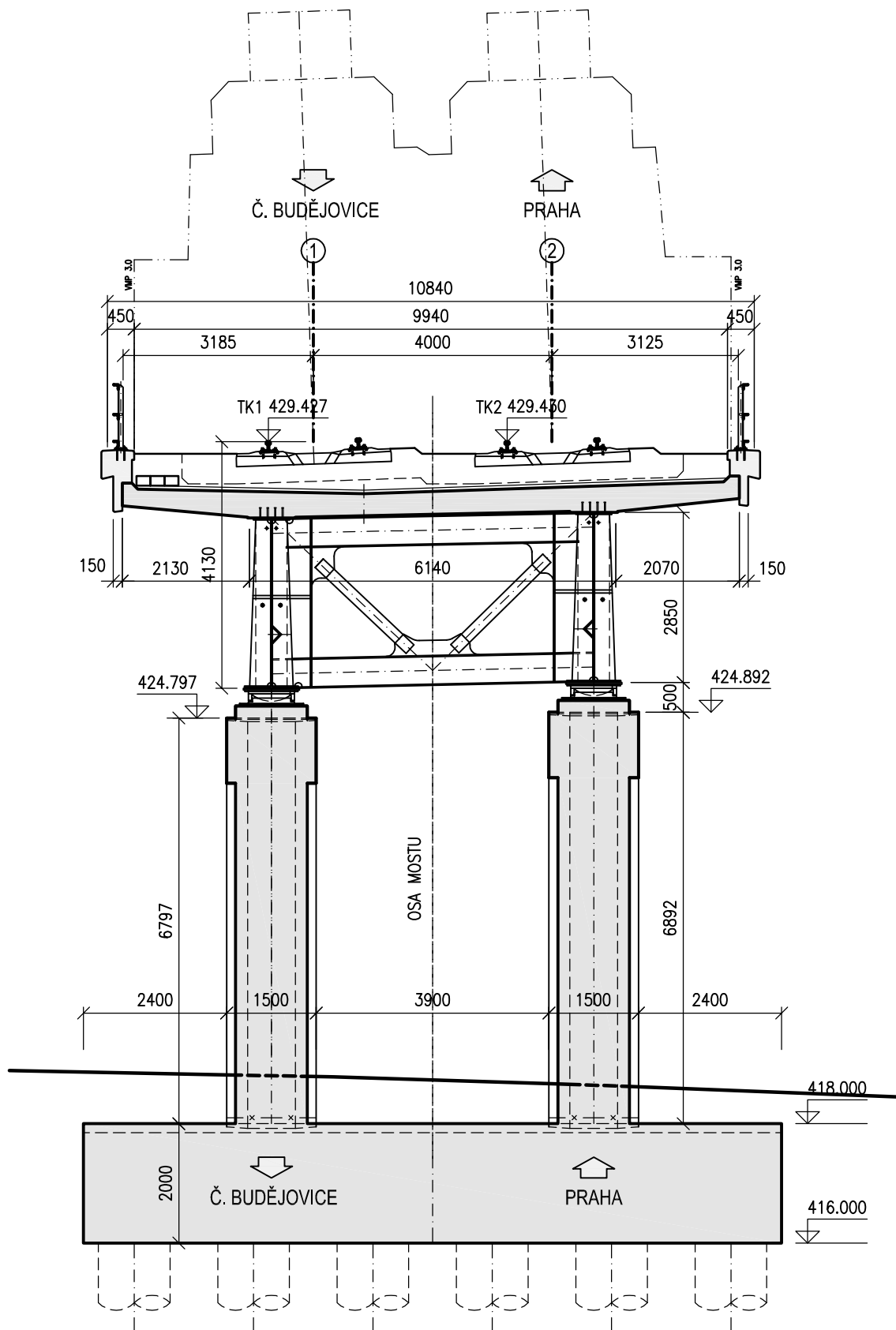


P19 - km 65,610 300

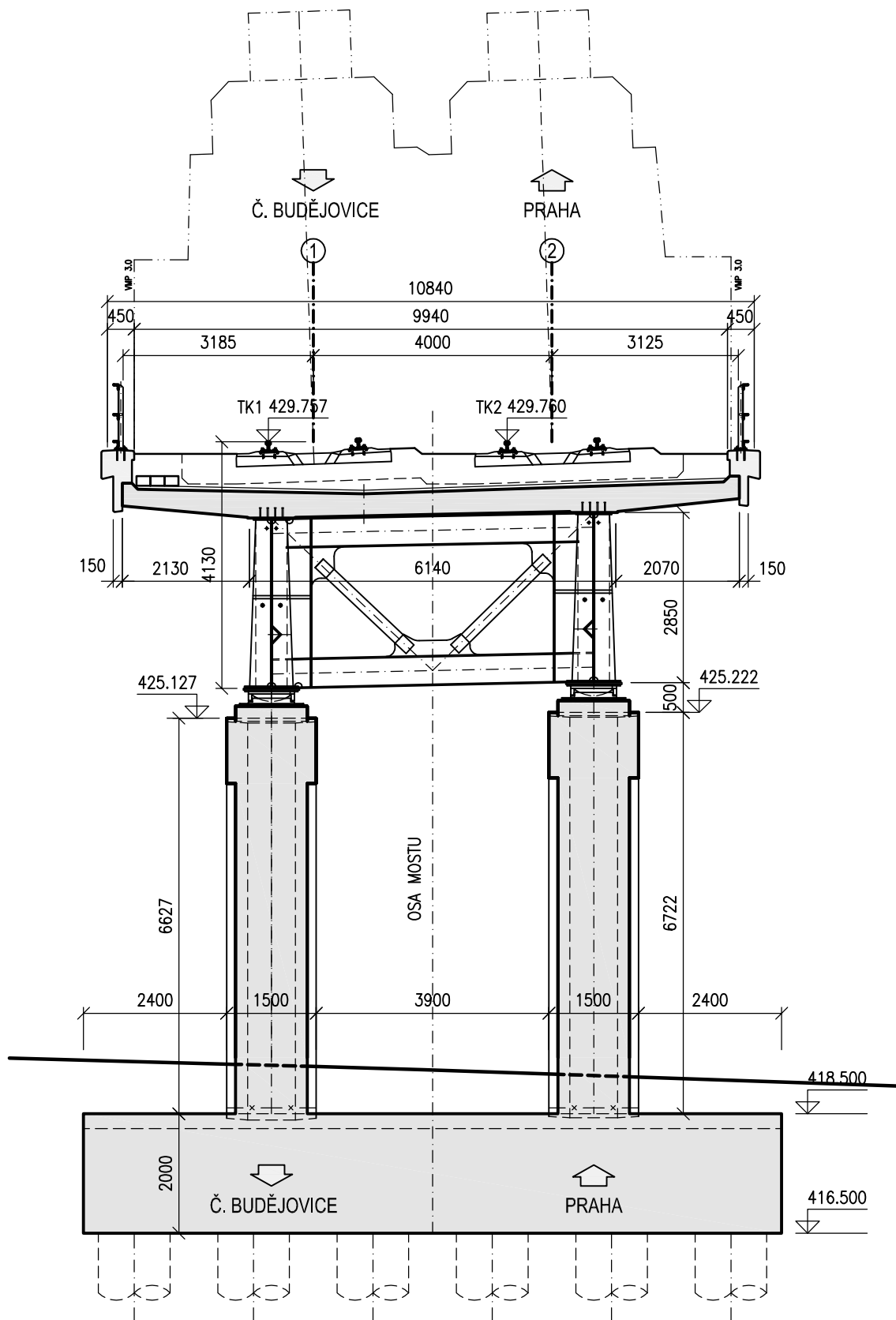




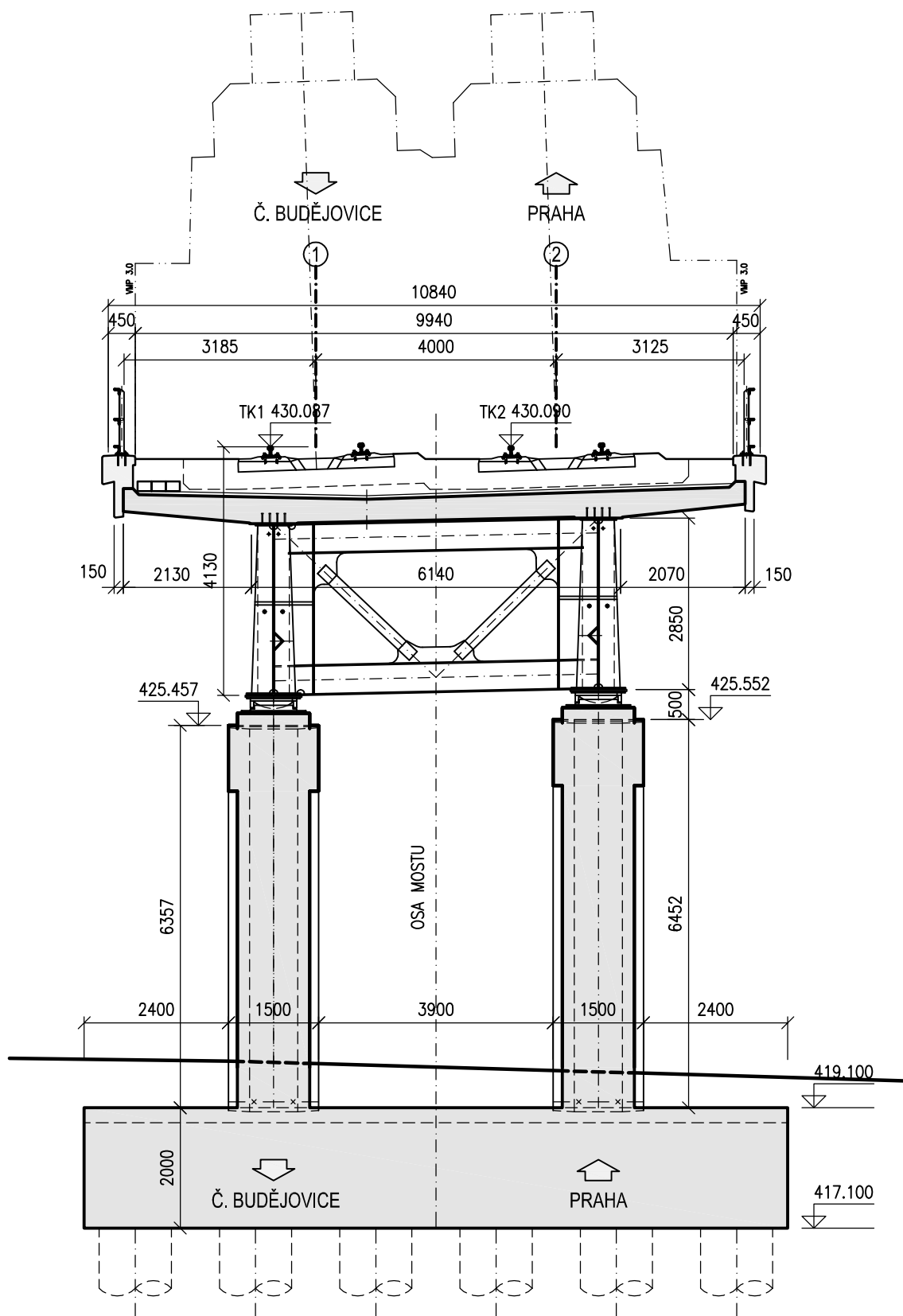
P21 - km 65,672 300

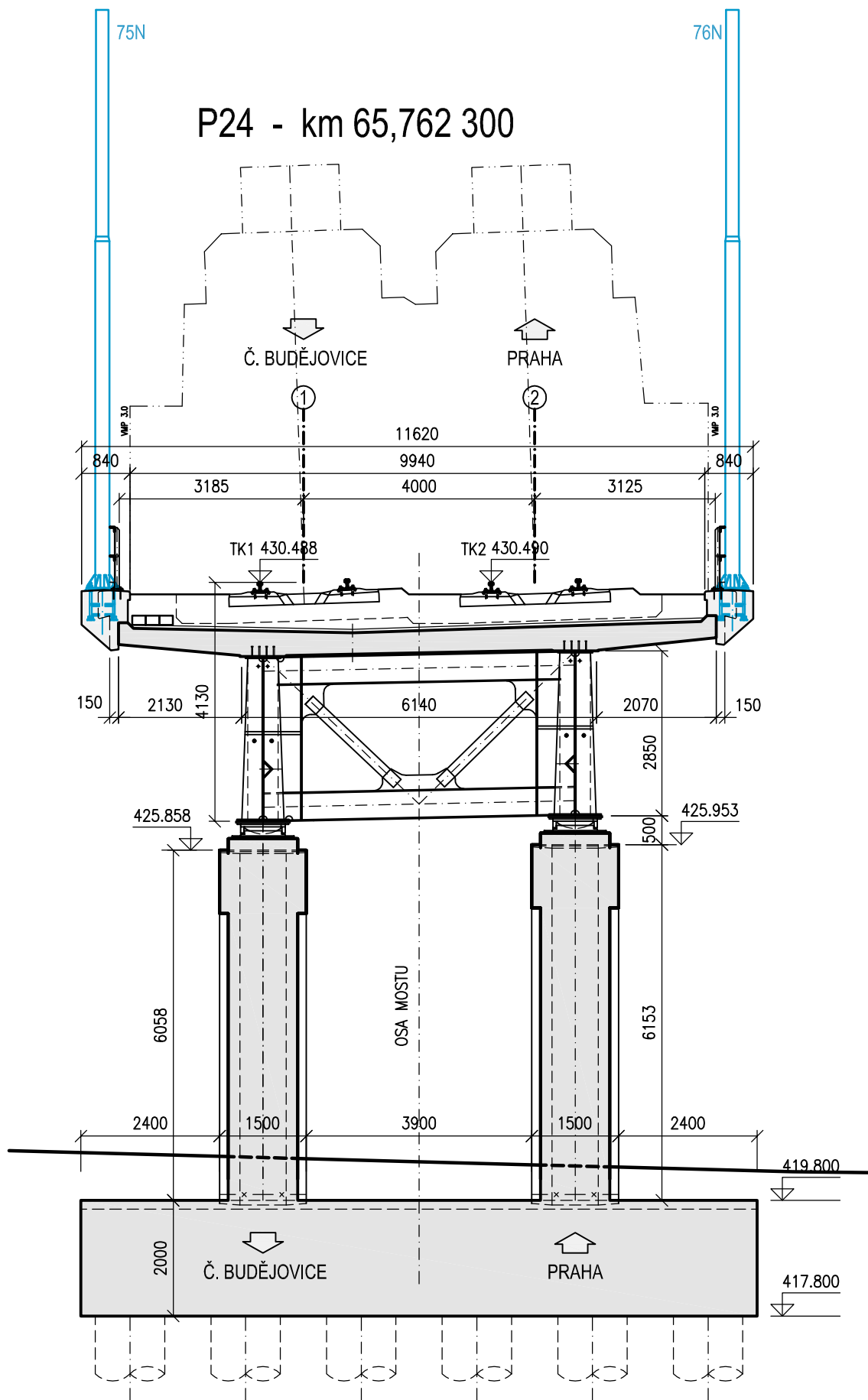


P22 - km65,700 300

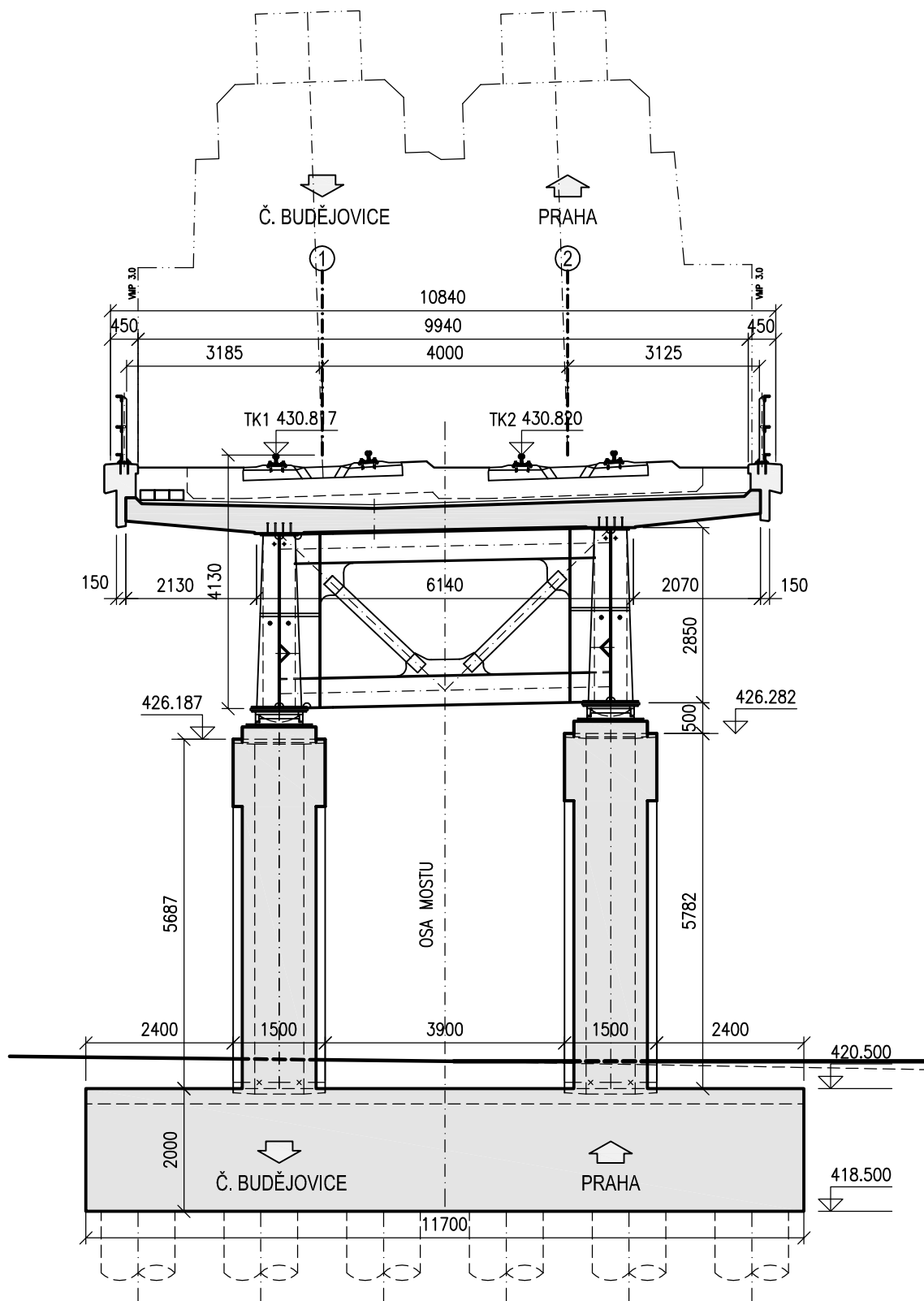


P23 - 65,728 300





P25 - km 65,790 300



78N

This technical drawing illustrates the cross-section of a bridge, detailing its structural components and key dimensions. The bridge features two main piers supporting a deck with two traffic lanes.

- Deck Dimensions:** The total width of the deck is 11620 mm. It includes side margins of 840 mm on each side, lane widths of 3185 mm and 3125 mm, and a central separation of 4000 mm.
- Elevations:** Key elevation points are marked: 426.477 on the left pier top, 426.572 on the right pier top, 431.107 at the left track level (TK1), and 431.100 at the right track level (TK2).
- Pier Structure:** Each pier has a base width of 1500 mm and a height of 6072 mm from the ground level to the deck. The distance between the centers of the two piers is 3900 mm.
- Ground Level:** The ground level is indicated by a dashed line at an elevation of 420.500. Below it, a solid line shows the riverbed or foundation level at 418.500.
- Orientation:** Arrows indicate the direction of travel towards Č. BUDĚJOVICE (left) and PRAHA (right).

O2 - km 65,838 750

